

CONFLUENCE

Turner Recreation
Meeting: 01-11-2024

DRC Oversight Review Meeting – 01/11/24

- No signage variance
- Looking at a storm and traffic memo
- Incorporating secondary gate to service for emergency access

LWCF Grant

- Waiting on a February approval and May funding

Bidding/Construction

- Bidding in March '24
- Contract Negotiation/Approvals in April '24
- Mobilization in May '24
- +/- 6 Month Construction Period



Overall Parks Facilities Improvements

- Universal signage throughout the parks

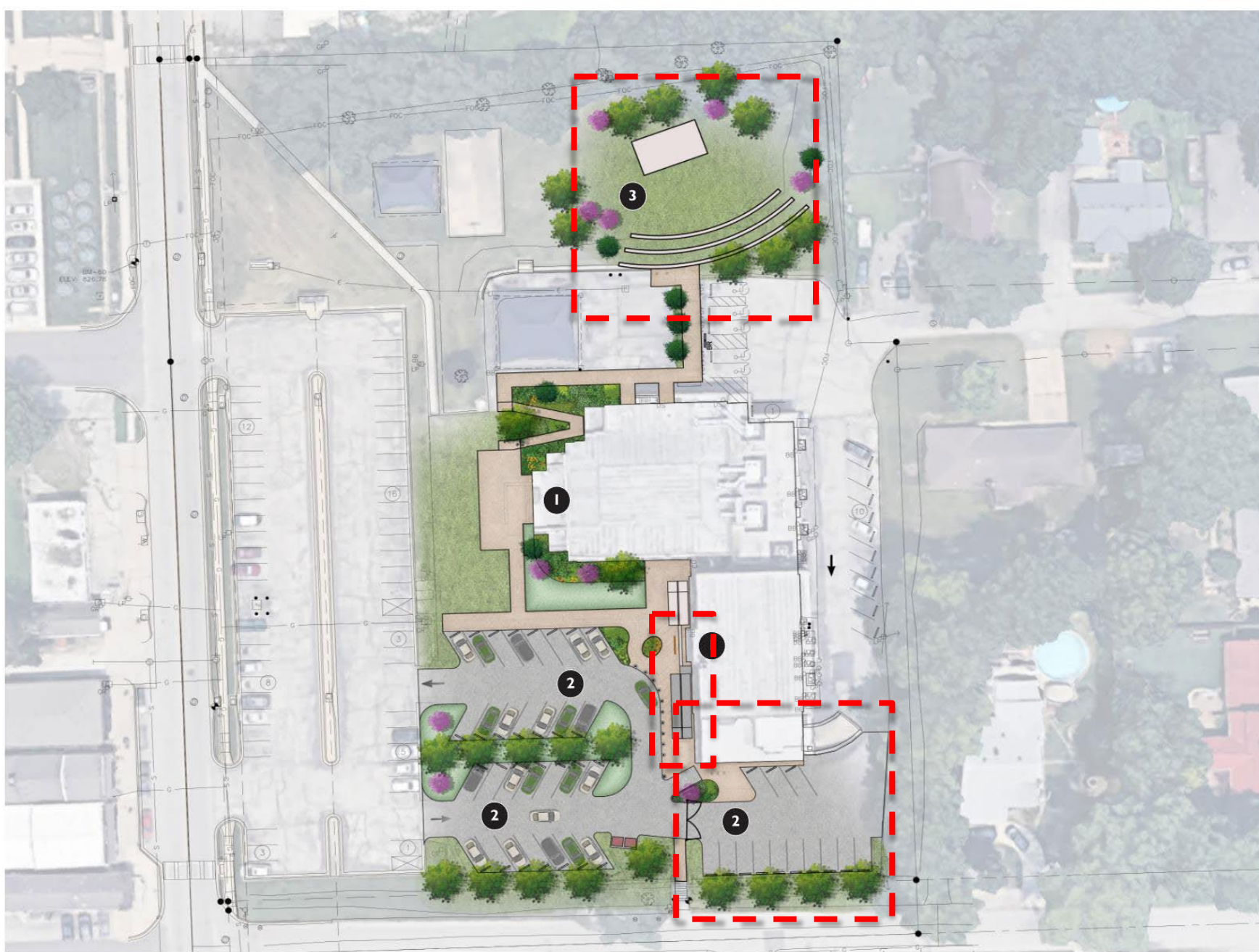
Turner Rec Center

- Marquee Signage
- Building Entrance Renovations, Lights
- Amphitheater/ Concert Stage
- Vehicle Enclosure
- Landscape Planting

Highland Park

- New Perimeter Fencing





LEGEND

1 RECREATION COMMISSION

- NEW ENTRANCES INTO THE BUILDING
- UPDATED CIRCULATION FROM RAMPS
- INTRODUCING CORTEN SCREENING ALONG RAILS
- NEW SIGNAGE

2 PARKING LOT

- NEW LAYOUT KEEPING THE ONE WAY CIRCULATION AROUND THE BUILDING ENTRANCE
- TRASH ENCLOSURE PLACED BEFORE FENCE ENCLOSURE
- FENCE ENCLOSURE FOR FACILITY VEHICLES

3 AMPHITHEATER

- USE OF EXISTING SLOPPED HILL FOR NEW AMPHITHEATRE FUTURE FOR EVENTS

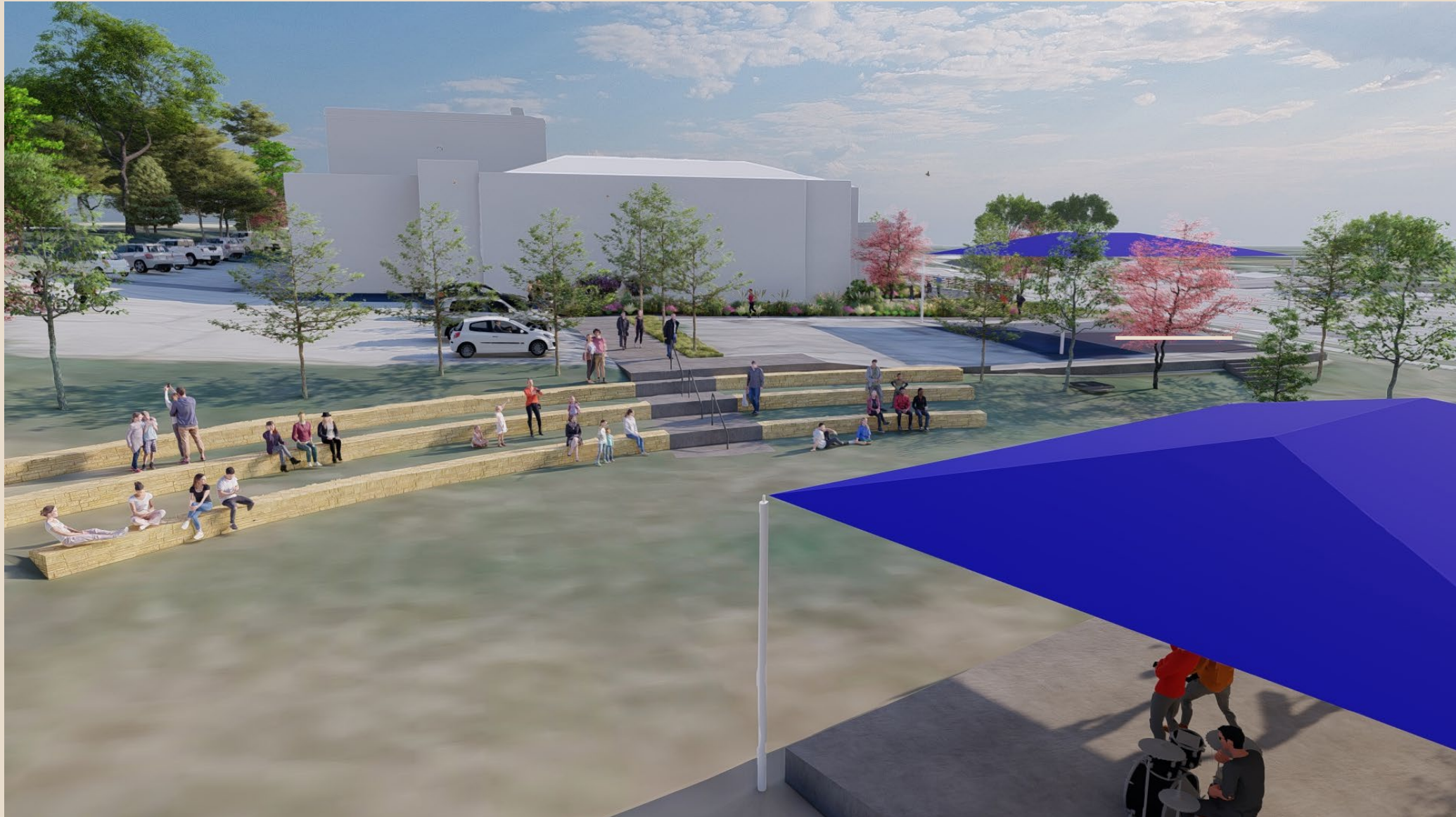
3 PLANTING PLAN

- ADDITIONAL PLANTING MATERIAL FOR SITE DRAINAGE AND SHADE

Turner Recreation Rendering

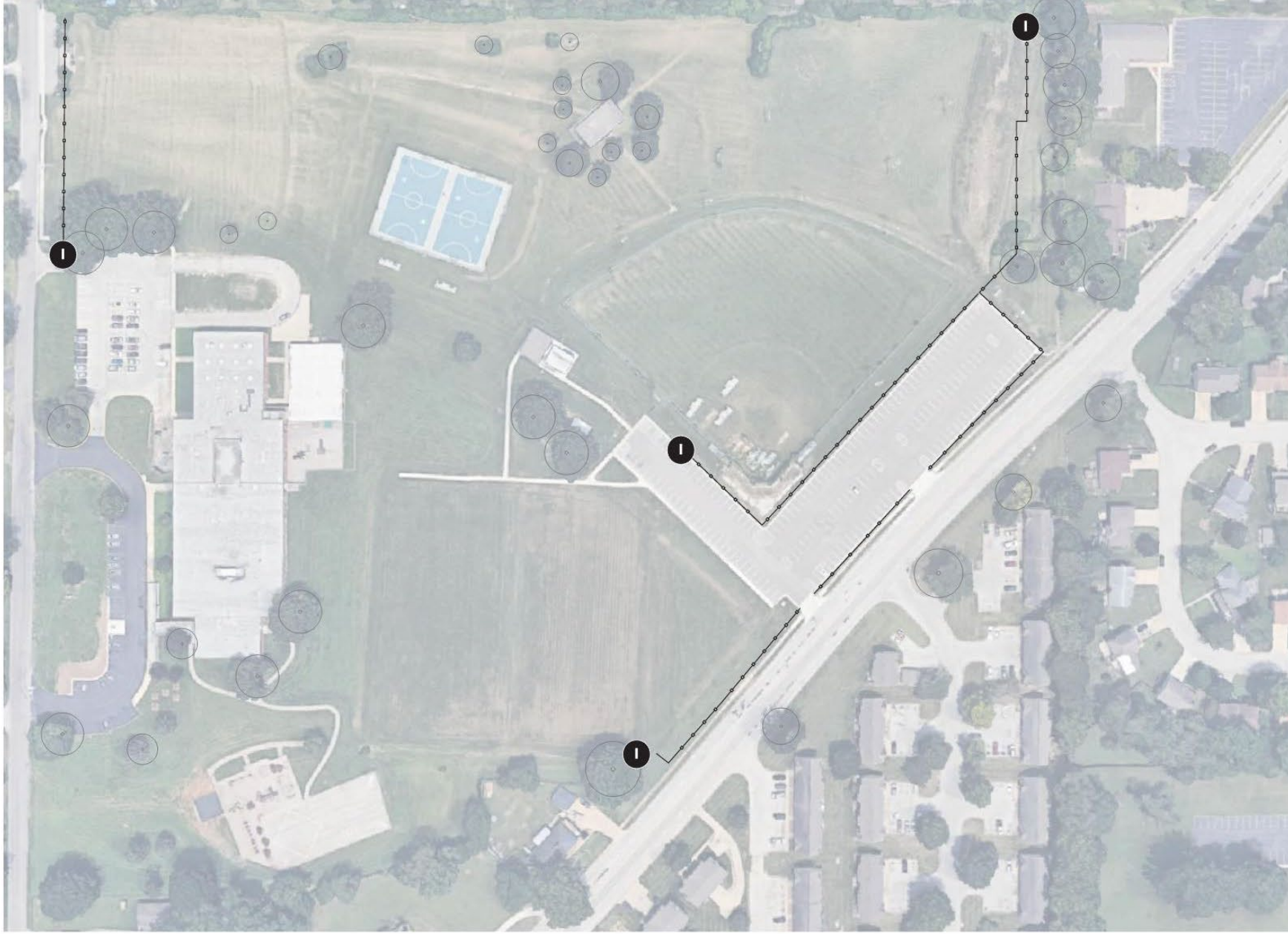


Turner Recreation Rendering



Turner Recreation Rendering





I RECREATION COMMISSION

- NEW FENCE FOR SITE